

# MONTHLY MEMBERSHIP PROGRESS REPORT

District 4 A2

Results as of: 12/31/2023

GMT:

LOCATION CALIFORNIA

GMT CA

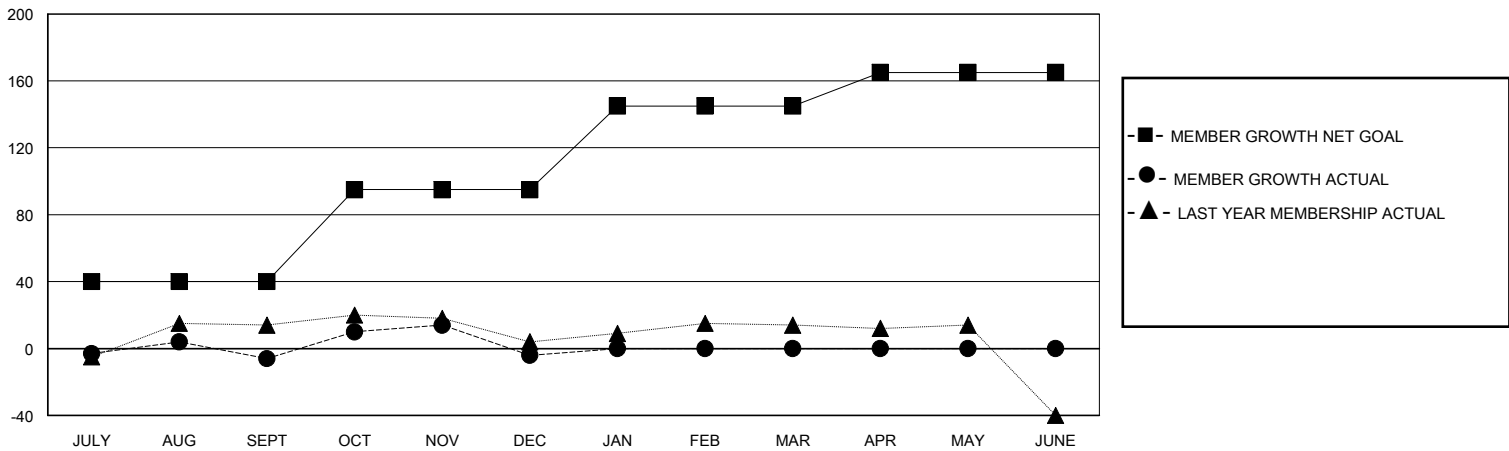
Clubs			
RESULTS FOR 2023-2024			
QUARTER	NEW CLUB GOAL	NEW CLUBS	DROPPED CLUBS
JULY/AUG/SEPT	0	0	0
OCT/NOV/DEC	0	0	1
JAN/FEB/MAR	1	0	0
APR/MAY/JUNE	0	0	0

Members			
RESULTS FOR 2023-2024			
QUARTER	MEMBER GROWTH NET GOAL	MEMBER GROWTH ACTUAL	DROPPED MEMBERS ACTUAL (including transfers)
JULY/AUG/SEPT	40	49	46
OCT/NOV/DEC	55	53	45
JAN/FEB/MAR	50	0	0
APR/MAY/JUNE	20	0	0

GOALS AND ACTUAL NEW CLUBS CUMULATIVE



GOALS AND ACTUAL MEMBERS CUMULATIVE



DROPPED CLUBS: 1

21 CLUBS OF 63 ADDED 1 OR MORE NEW MEMBERS

GENDER DISTRIBUTION

MALE 1,193 (69.24%)  
FEMALE 528 (30.64%)

DROPPED MEMBERS

DECEASED	8
CLUB CANCELLED	1
OTHER	83
<b>TOTAL</b>	<b>92</b>

[CLICK HERE FOR CUMULATIVE MEMBERSHIP DATA](#)

TOTAL FAMILY UNIT MEMBERS	275
FAMILY MEMBERS PAYING HALF DUES	147